



## Leadership

8:30 to 11:30 a.m.

### LOCATION:

Tulare County  
Office of Education  
6200 S. Mooney Blvd.  
Visalia, CA 93277

### AUDIENCE:

Administrators, Curriculum  
Coaches, Educators,  
EL Coordinators &  
Test Coordinators

No Cost

### INCLUDES:

Light refreshments

### OMS REGISTRATION:

<http://tulare.k12oms.org/147-168602>

### B.Y.O.D:

Bring your own device  
(laptop or tablet)

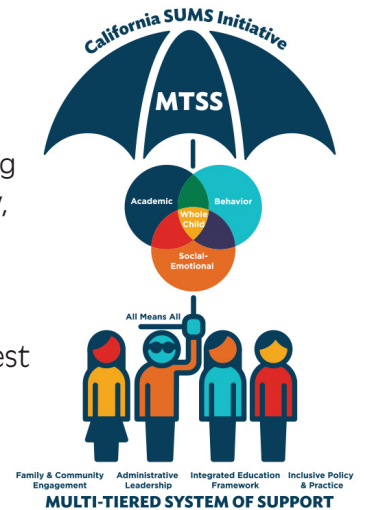
# Tulare County Office of Education

*Tim A. Hire, County Superintendent of Schools*

## Continuous Improvement for Equity in Districts and Schools: Focus on MTSS A Community of Practice

### 2019-2020

This learning community welcomes all school site and district teams wishing to continuously improve their systems by building on strengths, as well as investigating opportunities for growth. Co-learning, reflective inquiry, and systematic collaboration are at the heart of this work. Each session will begin with a short facilitated learning segment including a spotlight district, followed by supported team time. We look forward to sharing best practices, discussing barriers, and providing collective support around building a Multi-Tiered System of Support.



**Together we will work to set equitable conditions for learning for every child by aligning systems that guarantee positive outcomes in academics, behavior and social-emotional learning.**

*Ask us how this series aligns with and supports Differentiated Assistance (DA) and Comprehensive School Intervention (CSI) Qualification and Performance Indicator Review (PIR)!*



<http://tulare.k12oms.org/147-168602>



An Educational Resource Services  
Professional Development  
Opportunity

In partnership with...



**TULARE COUNTY**  
SPECIAL EDUCATION  
SPECIAL EDUCATION LOCAL PLAN AREA



### CONTENT CONTACT:

**Lisa Lemus**  
(559) 651-4825  
lisa.lemus@tcoe.org

**Jennifer Biagio**  
(559) 730-2910, Ext. 5140  
jennifer.biagio@tcoe.org

### REGISTRATION CONTACT:

**Ame Quinonez**  
(559) 651-3031  
ame.quinonez@tcoe.org

**Perla Estrada**  
(559) 302-3642, Ext. 3113  
perlae@tcoe.org